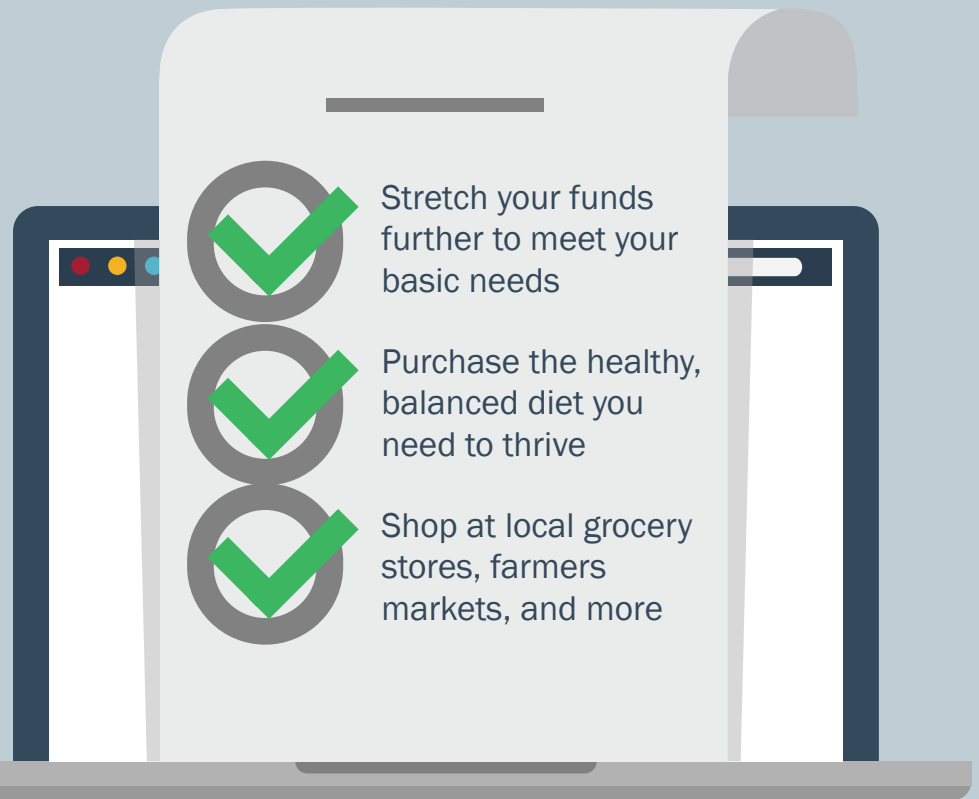




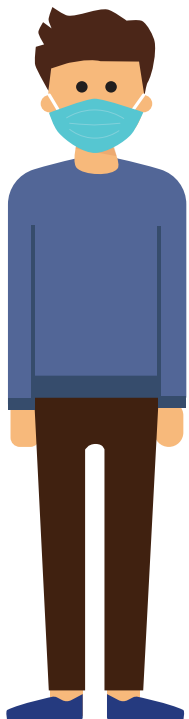
Supplemental  
Nutrition  
Assistance  
Program

## MAKE SNAP PART OF YOUR BACK TO SCHOOL CHECKLIST

[benefits.ohio.gov](https://benefits.ohio.gov)



If you have an Expected Family Contribution (EFC) of \$0 on your most recent FAFSA, or if you are eligible for work study, even if you are not participating, you may be eligible for \$234 per month or more in SNAP!



Your household income and other circumstances may impact your eligibility.

To learn more and apply for \$234 or more per month in funds to buy groceries, visit **[benefits.ohio.gov](https://benefits.ohio.gov)**.

